



Eaton County

4-H Family News

March 2019

Welcoming a new face in the 4-H office!

Welcome to Kaitlyn Rau, who is an AmeriCorps member serving with our program through August! Kaitlyn is a recent graduate from MSU in Nutritional Science and is part of the 4-H STEAM Corps AmeriCorps program to offer more 4-H SPIN Clubs!

What is a SPIN Club? It is a short-term club that typically meets between 6-8 times over a course of 6-8 weeks, an hour per week.

What is STEAM? Science, technology, engineering, arts, and math! These topic areas will be the focus for these clubs.

Kaitlyn is in the process of setting up SPIN clubs across the county and is gauging interest for topic areas and seeking volunteers. Current ideas include cooking/nutrition, forestry, entomology, sports, genealogy, microscopy, robotics and computer programming for teens, healthy living for teens, foods and fitness for cloverbuds, and agriculture and life science for cloverbuds. If you would be interested in these, please contact Kaitlyn at raukaitl@msu.edu and watch for more information in upcoming newsletters!

Upcoming County Meetings and Events:

PMR = Public Meeting Room (basement of Extension office); Kardel = Kardel Hall on the Eaton County Fairgrounds

- Small Animal Association, 3/7, 7 pm, PMR
- Swine Leader Meeting, 3/11, 7pm, PMR
- Horse Development Committee, 3/13, 6:30 pm, PMR
- 4-H Fashion Venue committee, 3/13, 6 pm, PMR
- Fairboard, 3/18, 7 pm, Kardel
- Dog Committee, 3/20, 6:30 pm, PMR
- Spring Leader Update Meeting, 3/27, 6:30pm, PMR
- 4-H Fashion Venue, 3/23, 2—5pm, St. Mary's, Charlotte
- 4-H Fun Day, 3/23, 4—9pm, Kardel
- Spring Leader Update Meeting, 3/27, 6:30 pm, PMR
- Jr Livestock Association, 4/8 7 pm, Kardel Hall
- Fairboard, 4/15, 7 pm, Kardel

Follow our Google calendar for a calendar layout of events!

http://msue.anr.msu.edu/county/eaton/eaton_county_4_h/4_h_events_calendar

Michigan State University is an affirmative action/equal opportunity employer. Michigan State University Extension programs and materials are open to all without regard to race, color, national origin, gender, gender identity, religion, age, height, weight, disability, political beliefs, sexual orientation, marital status, family status or veteran status. Issued in furtherance of MSU Extension work, acts of May 8 and June 30, 1914, in cooperation with the U.S. Department of Agriculture. Jeffrey W. Dwyer, Director, MSU Extension, East Lansing, MI 48824. This information is for educational purposes only. Reference to commercial products or trade names does not imply endorsement by MSU Extension or bias against those not mentioned. The 4-H Name and Emblem have special protections from Congress, protected by code 18 USC 707.

Contact Us

Kristy Oosterhouse
4-H Program Coordinator

551 Courthouse Drive
Suite One
Charlotte, MI 48813

Phone
517-543-2310

Email
oosterh6@msu.edu

Web Site
http://www.canr.msu.edu/eaton/eaton_county_4_h/

Stay Connected

Facebook:



[facebook.com/
EatonCounty4H](https://www.facebook.com/EatonCounty4H)

Eaton County 4-H Community Group

[facebook.com/
groups/806933519357705/](https://www.facebook.com/groups/806933519357705/)

Twitter

twitter.com/EatonCo4H

Pinterest

[pinterest.com/eatoncounty4h/](https://www.pinterest.com/eatoncounty4h/)

Instagram

[instagram.com/
eatoncounty4h](https://www.instagram.com/eatoncounty4h/)

**Registration
available for the
4-H Animal &
Veterinary
Science Camp**



The 4-H Animal & Veterinary Science Camp is now accepting applications through April 3.

This five-day pre-college program held at Michigan State University is open to 4-H members between the age of 13 and 17.

Youth will explore fields related to animal and veterinary medicine as well as participate in numerous hands-on learning activities.

Learn more and register today at https://www.canr.msu.edu/4_h_animal_veterinary_science_camp/.

4-H Events and Workshops

March 1-April 30: JOANN's Clover for Kids Campaign

Local JOANN stores, throughout Michigan

Support Michigan 4-H by visiting your local JOANN store from March 1 – April 30 and purchasing a clover at the register for either \$1 or \$4.

<https://www.canr.msu.edu/events/joann-s-clover-for-kids-campaign>

March 17: 4-H STEAM Sunday—China Art

Ingham County Fairgrounds, Mason

Learn about Chinese culture through an art exchange program. You will look at and learn about art created by students in China before creating your own art to send back.

<https://www.canr.msu.edu/events/4-h-steam-sunday-china-art>

March 26: 4-H Parliamentary Procedure Training

Muskegon County MSU Extension Office, Muskegon

This training is designed for both 4-H members and volunteers who want to learn more about parliamentary procedure and how it can be used in their 4-H clubs.

<https://www.canr.msu.edu/events/muskegon-county-4-h-parliamentary-procedure-training>

March 27-April 7: Tractor Supply Co. Paper Clover Campaign

Local Tractor Supply Co. stores, throughout Michigan

Visit your local Tractor Supply Company store March 27 – April 7 to purchase a paper 4-H clover for \$1 at checkout and support 4-H in your community.

<https://www.canr.msu.edu/events/tractor-supply-co-paper-clover-campaign-1>

April 7: Mission to Mars

Ingham County Fairgrounds, Mason

Ever wanted to know what it was like to be an astronaut and travel to Mars? Now is your chance to think, eat and explore Mars just like a astronaut would!

<https://www.canr.msu.edu/events/mission-to-mars>

April 13: Michigan 4-H Goat Expo

Anthony Hall, East Lansing

The State 4-H Goat Expo is designed for 4-H members interested in live animal evaluation and testing their knowledge of the goat industry in a fun, educational manner.

<https://www.canr.msu.edu/events/2019-michigan-4-h-goat-expo>

April 26-28: Michigan 4-H Shooting Sports Instructor Certification Workshop

Kettunen Center, Tustin

All 4-H shooting sports clubs are supervised by certified 4-H shooting sports instructors. Attend to earn instructor certification in archery, rifle, shotgun, pistol or muzzle loader.

<https://www.canr.msu.edu/events/2019-michigan-4-h-shooting-sports-instructor-certification-workshop>

For the most up-to-date events listing, go to <http://4h.msue.msu.edu/events>.

Ready to bring your fair projects home? Consider these tips as you prepare to purchase your livestock project!



Author: Katie Ockert, 4-H animal science educator

Acquiring new livestock is exciting, no matter if it is to build your herd or if it is the purchase of your annual 4-H project. Making sure to do your homework so that you are fully prepared is key in starting off on the right foot.

Michigan State University Extension recommends that you take the time to get all of the important health information about potential purchases from the seller and that you prepare animal housing facilities ahead of time. Taking these steps will help to make the transition to a new home as stress free as possible.

Assessing Animal Health and Treatment Documentation

When purchasing animals, it is important to know their history. Answering the following questions will help you make an informed purchase:

- 1) When was the animal born?
- 2) What vaccinations has the animal been given and when were they given?
- 3) Have any other treatments been administered to the animal (deworm, delouse, antibiotics, etc.)? If so, what is the withdrawal period for the drugs given?
- 4) Have any of the animals on the farm been ill or shown symptoms of illness?
- 5) If acquiring a market animal, what is the approximate weight?

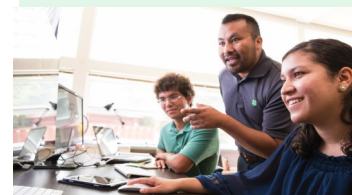
Bringing New Stock Home

Once you make the decision to purchase new stock, there are many additional considerations to keep in mind. These include:

- 1) **Transportation.** If you do not own a trailer, you may need to make arrangements with the breeder or someone else that has a trailer to transport animals for you. Please remember that although some people may want to help you out free of charge, as a courtesy, you should be prepared to pay someone to provide transportation.
- 2) **Unloading.** Making sure that your facility is ready to acquire new livestock before they arrive is essential and can make the transition less stressful. Make sure that you have a pen identified for new animals to go into that is set up with water and appropriate feed when you arrive.
- 3) **Settling in.** Newly acquired animals should be quarantined, or kept away from other animals that are already housed on the premises, for a minimum of 21 days. The more physical space you can put in between animals, the better.
- 4) **Comingling.** When you are beginning to comeingle animals, remember that each specie has a herd hierarchy. It is important to make sure that hazards to animals as they establish their place in the herd or flock are kept to a minimum.

For more information about your 4-H animal science projects, visit <https://www.canr.msu.edu/animal-science/>.

4-H Show Your Money Smarts Contest



Learn about investments and put your knowledge to the test. Compete with others across the state in this online challenge during the entire month of April.

During this Money Smart Month contest, you can win prizes for both your county and yourself. High scoring youth will be entered into a prize drawing for a \$100 4-H event scholarship.

Learn more and register today at <https://www.canr.msu.edu/4-h-money-smarts/>.

2019 Fair Theme

The fair theme for the 2019 Eaton County Fair is:

The County Fair—An All American Tradition

Deadline reminder: Enroll by March 15!

Youth who wish to show at the Eaton County Fair as a 4-H member must be fully enrolled in 4-H by March 15. Not sure if you are enrolled? You can easily check! Log into your 4-H Online account and look at each member under the blue chart titled “Member/Volunteer List” and look at “Enrollment Status”. The following options may appear:

- Active: Fully enrolled!
- Pending: NOT ENROLLED. You need to submit your 4-H Participation Fee to the Extension office. If you paid to your club, remind the club leader to submit the fee to the office.
- Incomplete: NOT ENROLLED. You need to finalize and submit your enrollment. This usually happens if the signature authorization page was not correctly completed and needs to be redone.
- Inactive: NOT ENROLLED. You need to renew your 4-H Online profile. Members should receive an email from the system as well once their profile has been approved. You can check your account by visiting https://www.canr.msu.edu/resources/michigan_4_h_enrollment. If you have questions about your status listed in 4-H Online, please contact the office.

Eaton County 4-H Fun Day

Interested in learning about different 4-H projects, meeting other 4-Hers, and having fun? Come out to the 4-H Fun Day! Featuring animal and non-livestock project learning from 4 p.m.—6 p.m. and pizza and a dance from 6 pm—9 pm on March 23 at Kardel Hall on the Eaton County Fairgrounds. This event is free, but please RSVP by signing up at <https://www.signupgenius.com/go/30e0d45aca82aaafc1-eaton1>. The committee is also still looking for a few more volunteers interested in teaching a project! If you would like to teach a project, visit <https://www.signupgenius.com/go/30e0d45aca82aaafc1-eaton> to sign up. If you have any questions or concerns, contact Chyanne Rea at 269-908-0165 or Jael Tombaugh at 517-983-9161.

4-H Fashion Venue registration now open!

Do you enjoy making clothes and accessories? Show your confidence and your items by participating in the 4-H Fashion Venue event! The event will take place on Saturday, March 23, from 2 p.m. –5 p.m. at St. Mary’s Catholic Church in Charlotte. Pre-registration for the event is free but required by March 11. For more details about this fashion show and to register, visit https://www.canr.msu.edu/eaton/eaton_county_4_h/eaton_county_4_h_associations_and_committees/fashion_venue_committee.

Delta Wild 4-H Spring Series

Interested in learning more about wildlife? Come be a wildlife biologist! Youth will learn about the wildlife in Delta Township, conduct hands-on scientific research using motion cameras to study wildlife, and learn from students and faculty at MSU! The spring series is on Wednesdays from April 3—May 29 from 4:30 p.m. to 6 p.m. at the Delta Township District Library. This club is FREE if you are already a registered 4-H member or only \$20 for the 4-H Participation Fee (scholarships available). Please sign up in the “SPIN Club Delta Wild 4-H” club in 4-H Online to register for this series or contact the Extension office!

Small Animal Association Corner

- Next meeting: 3/7 at 7 p.m. in the PMR. All those in rabbit/cavy, poultry, and goat projects are encouraged to attend. This meeting will discuss donations to fair board from sale profit.
- Are you attending any 4-H events like 4-H Exploration Days? Youth in small animal projects can earn scholarships for attending meetings! \$15/meeting for up to 4 meetings per year.
- Reminder that SAA voted to have clubs rotate who is in charge of the SAA sale lunch and silent auction. The list of clubs responsible this year and the duties can be found at [https://www.canr.msu.edu/uploads/234/91032/SAA Luncheon and Silent Auction Club Rotation Schedule.pdf](https://www.canr.msu.edu/uploads/234/91032/SAA_Luncheon_and_Silent_Auction_Club_Rotation_Schedule.pdf)

Horse Development Committee Corner

- Next meeting: 3/13 at 6:30 p.m. in the PMR. HDC will feature educational presentations from state show delegates, discuss future meetings, and the June clinic.

4-H Fashion Venue Corner

- Next meeting: 3/13 at 6 p.m. at the Extension office. This meeting will discuss further event planning for the 4-H Fashion Venue (formerly 4-H Style Revue). If you are involved in the clothing/textile project areas (sewing, knitting, crocheting, etc), you are encouraged and welcome to attend to help shape this event!
- See page 4 for registration information!

Dog Committee Corner

- Next meeting: 3/20 at 6:30 p.m. in the PMR. Get information on Bonnie's spring dog classes at this meeting.
- Pre-Fair Dog Show information is now available on the website: https://www.canr.msu.edu/eaton/eaton_county_4_h/eaton_county_4_h_associations_and_committees/dog_committee

Jr Livestock Association Corner

- Next meeting: 4/8 at 7 p.m. at Kardel Hall. All those in beef, sheep, and swine projects are encouraged to attend. This is the Buyer's Workshop! All youth who are selling in the sale are strongly encouraged to attend to learn about the sale forms and buyer etiquette. Youth who attend the meeting will be able to pick up 2 passes for new buyers at the end of the meeting. Youth who do not attend will not be able to get passes until after May 8.

4-H Council Corner

- Next meeting: 5/6 at 7 p.m. in the PMR.
- 4-H Council scholarship requirements to attend state level 4-H events like 4-H Exploration Days have been updated! Check out the new process at https://www.canr.msu.edu/eaton/eaton_county_4_h/eaton_county_4_h_club_resources/scholarships

Swine leader meeting

Monday, March 11 at 7:00 pm in the PMR (basement of the Extension office)

Fair board

Next meeting: 3/18 at 7 p.m. at Kardel Hall.

Spring Leader Update Meeting

The Spring Leader Update meeting will be on Wednesday, March 27, at 6:30 p.m. in the PMR (please note date change!). All clubs must send at least one registered volunteer to this meeting. The meeting will go over 4-H updates, fair information, and sign-ups for Food Shack, grey building, and fairground clean-up shifts. **It is highly important that someone attends due to major updates with how entries and the sales will work this year.** If nobody from your club can make the meeting, you need to meet with Kristy prior to March 29 (Kristy is not available in April to meet).

NEW: Resources for clubs

4-H Council is sponsoring each club to purchase up to \$50 per club of 4-H curricula for club use! You can view prices and curricula types at https://www.canr.msu.edu/eaton/eaton_county_4_h/eaton_county_4_h_club_resources/ (scroll down to “Resources available for club use” and look under “Resource books”). Copies of each curricula are also available at the Extension office if you wish to see the curricula prior to deciding what the club would like to buy (Extension office copies are also available for check out or purchase depending on the curricula). Please contact the Extension office with which curricula your club would wish to purchase!

Prospective Volunteers

All prospective volunteers must go through the Volunteer Selection Process in its entirety prior to being accepted as a volunteer. Any adult who is involved in a club activity on an ongoing basis (more than 4 meetings) must go through this process. The full process can be found at http://www.canr.msu.edu/resources/msu_extension_volunteer_selection_process. Contact the Extension office with any questions!